



Diaphragmless Ejectors

Up to 600 PPD (12 Kg/h)

The Hydro Instruments diaphragmless ejectors have been expertly designed and each one carefully tested to guarantee years of solid operation. They are constructed of the finest materials available for gas service and carry the industry's best warranty.

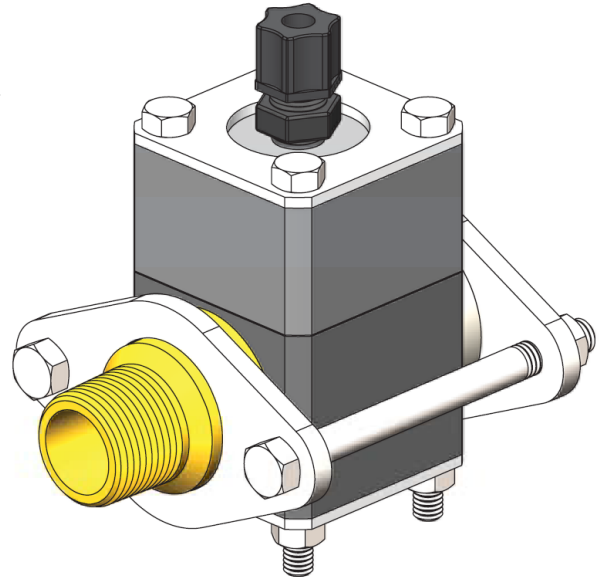
Diaphragmless Check Valve

A diaphragmless ejector incorporates a spring-loaded check valve that functions without the use of a rubber diaphragm. Vacuum created by the ejector nozzle opens the check valve and an absence of vacuum allows the spring combined with water pressure to close the check valve.

Applications

Diaphragmless ejectors are best suited for use in applications where back pressures are high (e.g. greater than 145 PSI), but can be used in applications with much lower back pressures. A minimum back pressure of 15 PSI is recommended.

Diaphragmless ejectors are also great for systems with frequent on/off cycling that would stress an ejector with a rubber diaphragm.



Specifications

Feed Capacity

Capacity	Tubing Size	Inlet (Nozzle)	Outlet (Throat)
100 PPD (2 Kg/h)	3/8"	3/4" NPT	3/4" NPT
100 PPD (2 Kg/h)	3/8"	1" NPT (Brass) *	1" FPT (Monel) *
250 PPD (5 Kg/h)	1/2"	1-1/4" NPT	1-1/4" NPT
600 PPD (12 Kg/h)	5/8"	1-1/4" NPT	1-1/4" NPT

Different inlet nozzle and throat orifice sizes are available for the diaphragmless ejectors. Please refer to Hydro Instruments' ejector nozzle charts for this information and proper nozzle/throat selection.

* For EJH-143-CL2-HP high pressure diaphragmless ejector only.

Back Pressure Information

Back Pressure	Ejector Option
15-145 PSI (10 bar)	Standard models
15-250 PSI (17 bar)	Ejectors with high pressure body plates.
15-300 PSI (21 bar)	Model EJH-143-CL2-HP high pressure diaphragmless ejector. Note: Limited to 100 PPD (2 Kg/h) capacity, inlet is 1" MPT (Brass), outlet is 1" FPT (Monel)

